

# **IWAKI Air Pump**

---

## **APN-450**

---

### **Instruction Manual**

---

⚠ Read this manual before use of product

Thank you for selecting an Iwaki APN-450 Air Pump. This instruction manual deals with "Safety instructions", "Outline", "Installation", "Operation" and "Maintenance" sections. Please read through this manual carefully to ensure the optimum performance, safety and service of your pump.

## Contents

<b>Safety instructions</b>	<b>1</b>
<i>Outline</i>	
1. Unpacking & Inspection	5
2. Product outline	5
3. Specification	6
4. Dimensions	7
5. Performance curves	9
6. Overview	10
7. Exploded view	11
<i>Installation</i>	
1. Before installation	16
2. Installation/ Tubing/ Electrical wiring	19
<i>Operation</i>	
1. Before operation	23
2. Pump operation	23
<i>Maintenance</i>	
1. Troubleshooting	25
2. Maintenance & Inspection	26
3. Wear part replacement	27



*This instruction manual should be kept on hand by the end user for quick reference.*

*Contact us or your nearest dealer if you have any questions.*

# Safety instructions

## For the Safe and Correct Handling of the Pump

- "Safety Instruction" section deals with important details about handling of the product. Before use, read this section carefully for the prevention of personal injury or property damage.
- Observe the instructions accompanied with "WARNING" or "CAUTION" in this manual. These instructions are very important for protecting users from dangerous situations.
- The symbols on this instruction manual have the following meanings:

 <b>WARNING</b>	<b>Nonobservance or misapplication of "Warning" sections could lead to a serious accident which may result in death.</b>
 <b>CAUTION</b>	<b>Nonobservance or misapplication of "Caution" sections could lead to a personal injury or property damage.</b>

### Types of Symbols



Indicates that "Warning" or "Caution" must be exercised. Inside this triangle, a concrete and practical image provided as a warning or caution message is depicted.



Indicates a prohibited action or procedure. Inside or near this circle, a concrete and practical image of the activity to be avoided is depicted.



Indicates an important action or procedure which must be performed or carried out without fail. Failure to follow the instructions herein can lead to malfunction or damage to the pump.

### **Export Restrictions**

Technical information contained in this instruction manual might be treated as controlled technology in your countries, due to agreements in international regime for export control. Please be reminded that export license/permission could be required when this manual is provided, due to export control regulations of your country.

# Safety instructions

## WARNING

- **Turn off power**

Risk of electrical shock. Dismantling/assembling the pump unit without turning off power may cause an electrical shock. Before engaging in any maintenance or inspection work, be sure to turn off the pump and related devices.



- **For specified application only**

The use of the pump in any application other than those clearly specified may result in injury or damage. Use the pump in a specified condition.



- **No modification**

Do not modify the pump. We are not responsible for any accidents or damage due to modification.



- **Specified power only**

Do not apply any power other than the specified one on the nameplate. Otherwise, personal injury or property damage may result.



- **Wear protective clothing**

Always wear protective clothing such as safety goggles and protective gloves during pipework or dismantlement.



- **Do not touch the pump or pipe with bare hands**

The surface temperature of the pump or pipe rises high along with gas temperature in or right after operation.



## CAUTION

- **Restriction on operators**

The pump should be handled by a qualified person with a full understanding.



- **Ventilation**

Poisoning may result when handling a toxic or odorous liquid. Keep good ventilation in a working area.



- **Operating and Storage conditions**

Do not install or store the pump:

1. Where ambient temperature falls below 0°C or exceeds 40°C.
2. Under a flammable/corrosive atmosphere.



- **Countermeasure against efflux**

Take protective measures against the accidental efflux caused by diaphragm breakage.



# Safety instructions

## CAUTION

- **Do not wet the pump**

If a liquid spills over electric parts or wires, a fire or electrical shock may result. Install the pump in a place free from liquid spillage.



- **Damaged pumps**

Do not use any damaged pump. Using a damaged pump may lead to an electric leak or shock.



- **Stop operation**

On sensing any abnormality or danger, stop operation immediately and inspect/solve problems.



- **Wear part replacement**

Observe related instructions for part replacement. Do not dismantle the pump beyond the extent described in this manual.



- **Do not damage a power cable**

Risk of fire or electrical shock. Do not scratch, modify, or pull a power cable. The cable can also be damaged when it is heated or loaded with a heavy thing.



- **Do not place the pump close to water**

The pump is not dust-/water-proof construction. The use of the pump in a humid place or a place where the pump can get wet may result in electrical shock or short-circuit.



- **Install an earth leakage breaker**

Risk of electrical shock. Do not use the pump without an earth leakage breaker. Purchase separately.



- **Damaged power cable**

Do not use any damaged power cable for the prevention of a fire or electrical shock. The cable is not replaceable, so that the whole pump unit needs to be replaced when the cable is damaged.



- **Pump disposal**

Dispose of any used or damaged pump in accordance with local laws and regulations (Consult a licensed industrial waste products disposing company.).



- **Earth connection**

Always earth the pump in order to reduce the risk of electrical shock.



# *Outline*

<i>1. Unpacking &amp; Inspection .....</i>	<i>5</i>
<i>2. Product outline.....</i>	<i>5</i>
<i>3. Specification .....</i>	<i>6</i>
<i>4. Dimensions.....</i>	<i>7</i>
<i>5. Performance curves .....</i>	<i>9</i>
<i>6. Overview.....</i>	<i>10</i>
<i>7. Exploded view.....</i>	<i>11</i>

# Outline

## 1. Unpacking & Inspection



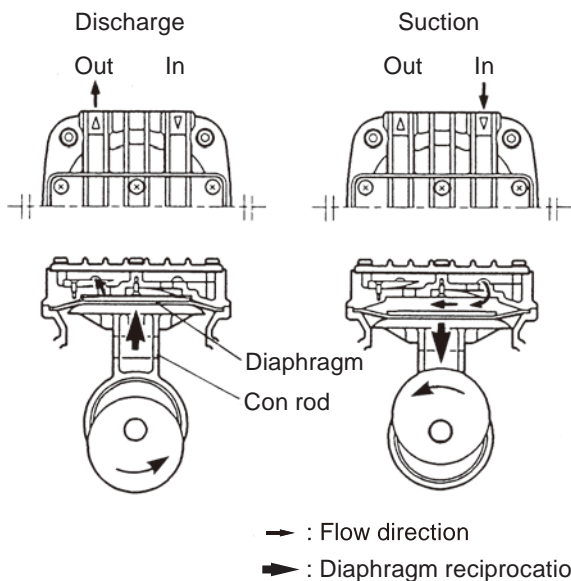
Model  
Air flow  
Discharge pressure  
Vacuum  
Manufacturing No.

On unpacking the product, check the following points. If you find any problems, contact your nearest distributor.

1. Check the information on labels to see if the delivery is as per order.
2. Check for transit damage and loose bolts.

## 2. Product outline

The APN-450 is a diaphragm type air pump.



### ■ Principle of operation

The rotary motion of the motor is converted through a connecting rod to the reciprocation of the diaphragm in the pump chamber, where gas is transferred from the inlet to outlet.

# Outline

## 3. Specification

### ■ Pump

50/60Hz

Model	Max. air flow	Max. discharge pressure	Max. vacuum	Connection I.D.		Weight	Lowest starting temperature
				Tube	Thread		
APN-450	NAT	50/60 L/min	0.1MPa	13.33kPa [abs.]	ø12	Rc1/4	0°C
	NST						
APN-P450	NAT	100/110 L/min	-	3.33kPa [abs.]	ø12	Rc1/4	0°C
	NST						
APN-S450	NAT	50/60 L/min	-	3.33kPa [abs.]	ø12	Rc1/4	0°C
	NST						

### ■ Motor

Model	Input power				Output power	Power current			
	100V	115V	200V	220/240V		100V	115V	200V	220/240V
APN-450	NAT	-	-	-	200W	3.2/3.5A (50/60Hz)	-	1.60/1.65A (50/60Hz)	1.5A (50Hz)
	NST	-	-	-					
APN-P450	NAT	360W (60Hz)	310/323W (50/60Hz)	310W (50Hz)	200W	3.2/3.5A (50/60Hz)	3.5A (60Hz)	1.60/1.65A (50/60Hz)	1.5A (50Hz)
	NST	295/345W (50/60Hz)	-	-					
APN-S450	NAT	-	-	-	200W	3.2/3.5A (50/60Hz)	-	1.60/1.65A (50/60Hz)	1.5A (50Hz)
	NST	-	-	-					

NOTE1. Observe the maximum discharge pressure of 0.1MPa.

2. Allowable gas temperature range is 0-40°C.

3. Allowable ambient temperature range is 0-40°C.

4. The air flow, maximum discharge pressure and maximum vacuum are obtained when ambient temperature is 20°C and change depending on gas characteristics and temperature fluctuation.

### ■ Wet end material

Parts	Type	NAT	NST
Pump head		ADC12	SUS304
Valve		SUS631-CSP	
Diaphragm		PTFE (PTFE+EPDM)	
Retainer plate		ADC12	SUS304
Filter (option)		Urethan	-
Valve restraint		ADC12	GF reinforced PPS
Gasket		EPDM	FKM
Cover		ADC12	SUS304
Seat		PTFE	
Fitting		BsBM	SUS304 equivalent
Screw		SUS304 equivalent	
Tube		Nylon	ETFE

ADC12 : Aluminium die casting

SUS304 : Austenite stainless steel (18Cr-8Ni)

SUS631-CSP : Stainless steel for springs (17-Cr-7Ni-1Al)

PTFE : Polytetrafluoroethylene

EPDM : Ethylene propylene diene Monomer

PPS : Polyphenylene sulphide

FKM : Fluorine-contained rubber

BsBM : Brass

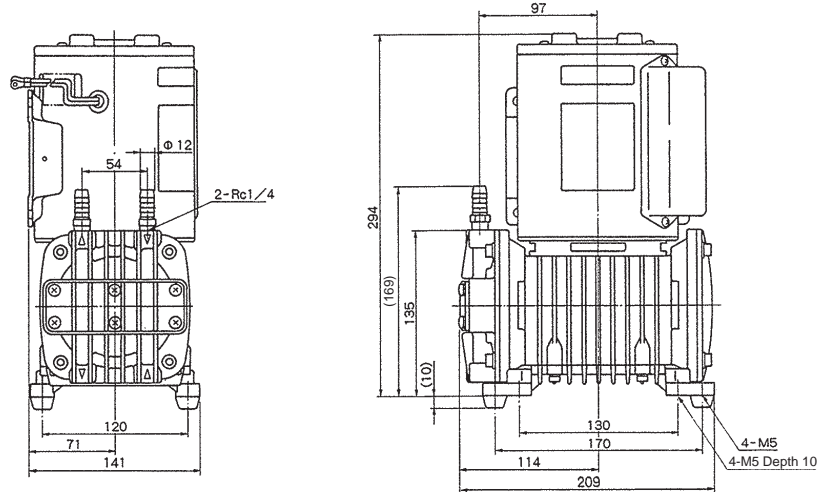
ETFE : Ethylene tetrafluoroethylene



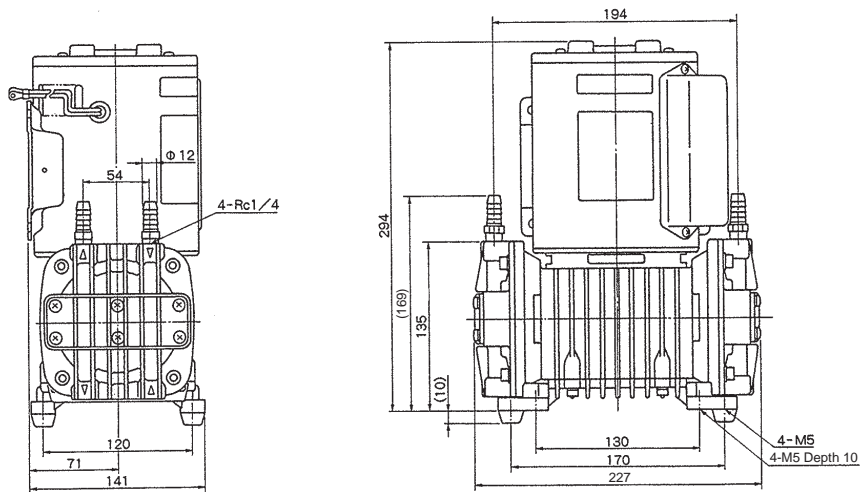
# Outline

## 4. Dimensions

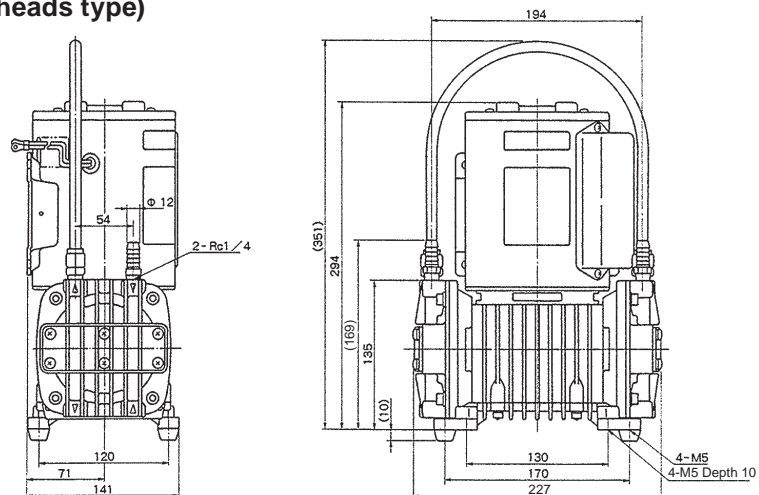
### ■ Aluminium pump head type APN-450 (Single head type)



### APN-P450 (Twin parallel heads type)



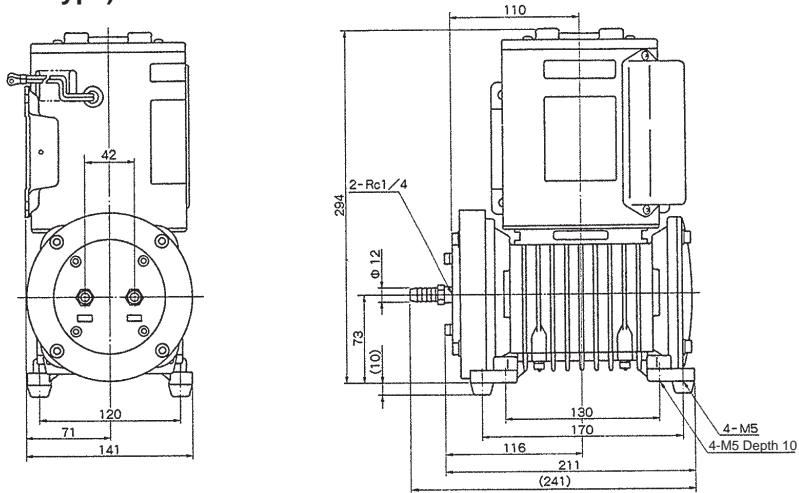
### APN-S450 (Twin series heads type)



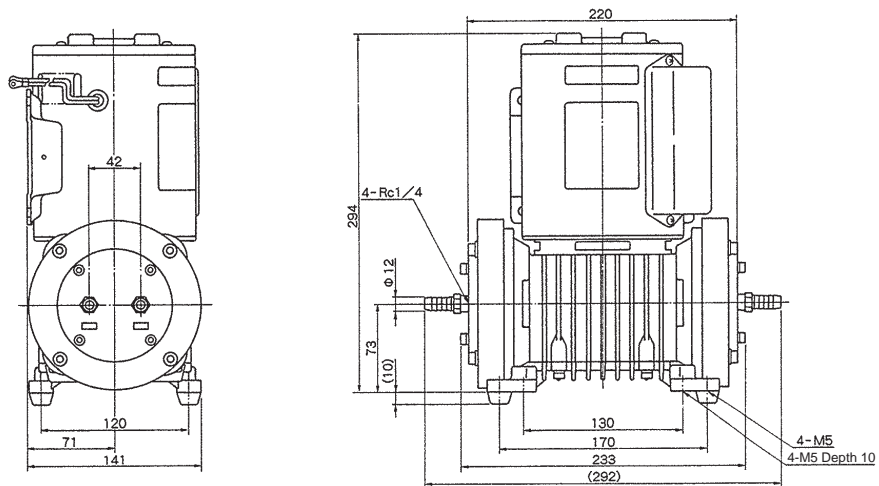
# Outline

## ■ Corrosive resistant stainless steel pump head

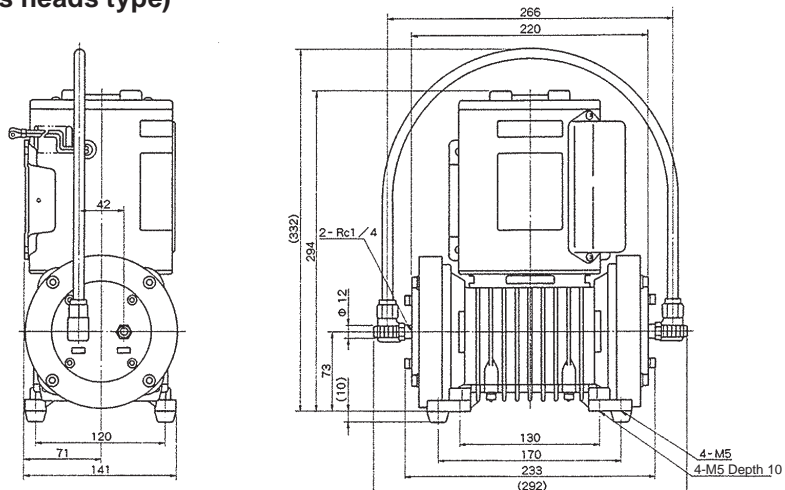
### APN-450 (Single head type)



### APN-P450 (Twin parallel heads type)



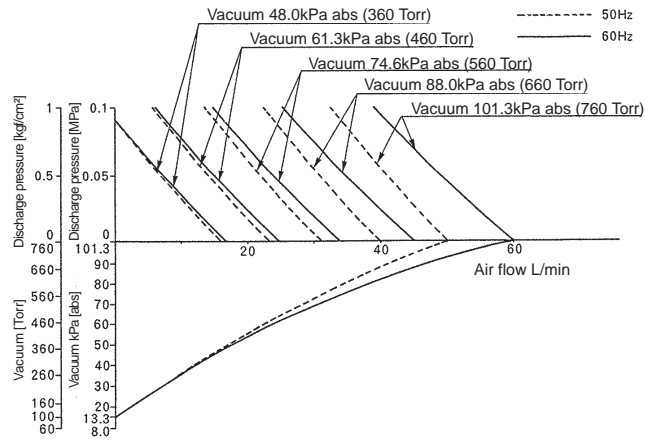
### APN-S450 (Twin series heads type)



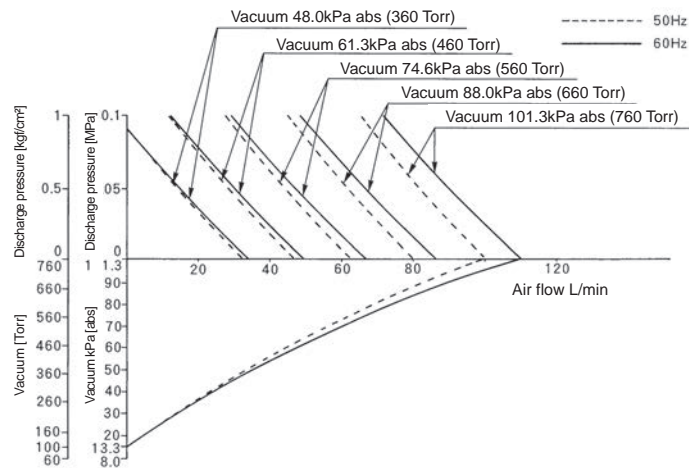
# Outline

## 5. Performance curves

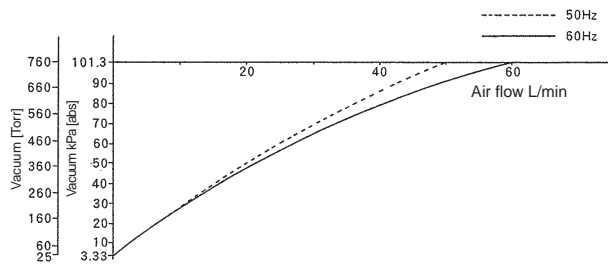
### ■ APN-450 (Single head type)



### ■ APN-P450 (Twin parallel heads type)



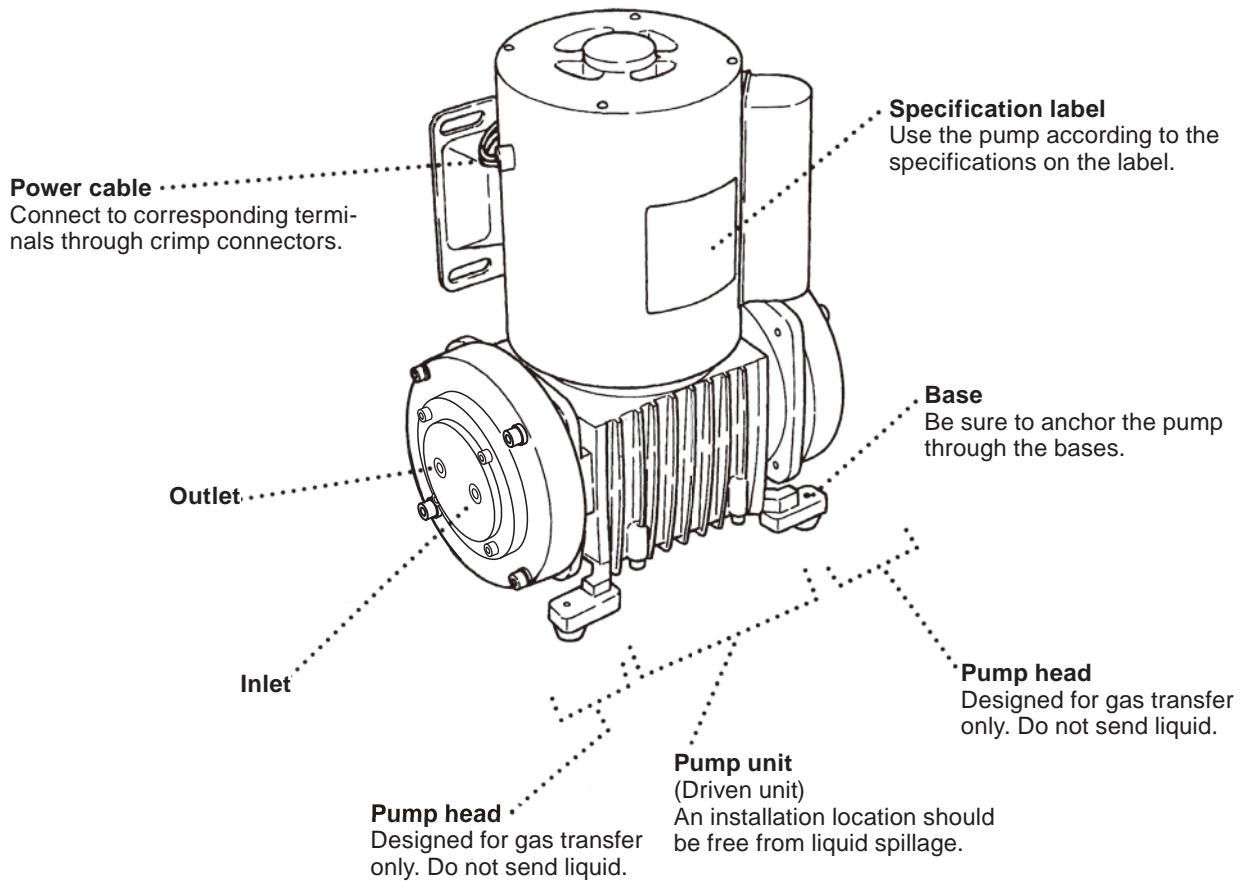
### ■ APN-S450 (Twin series heads type)



# Outline

## 6. Overview

The illustration below shows an APN-450 twin head type.

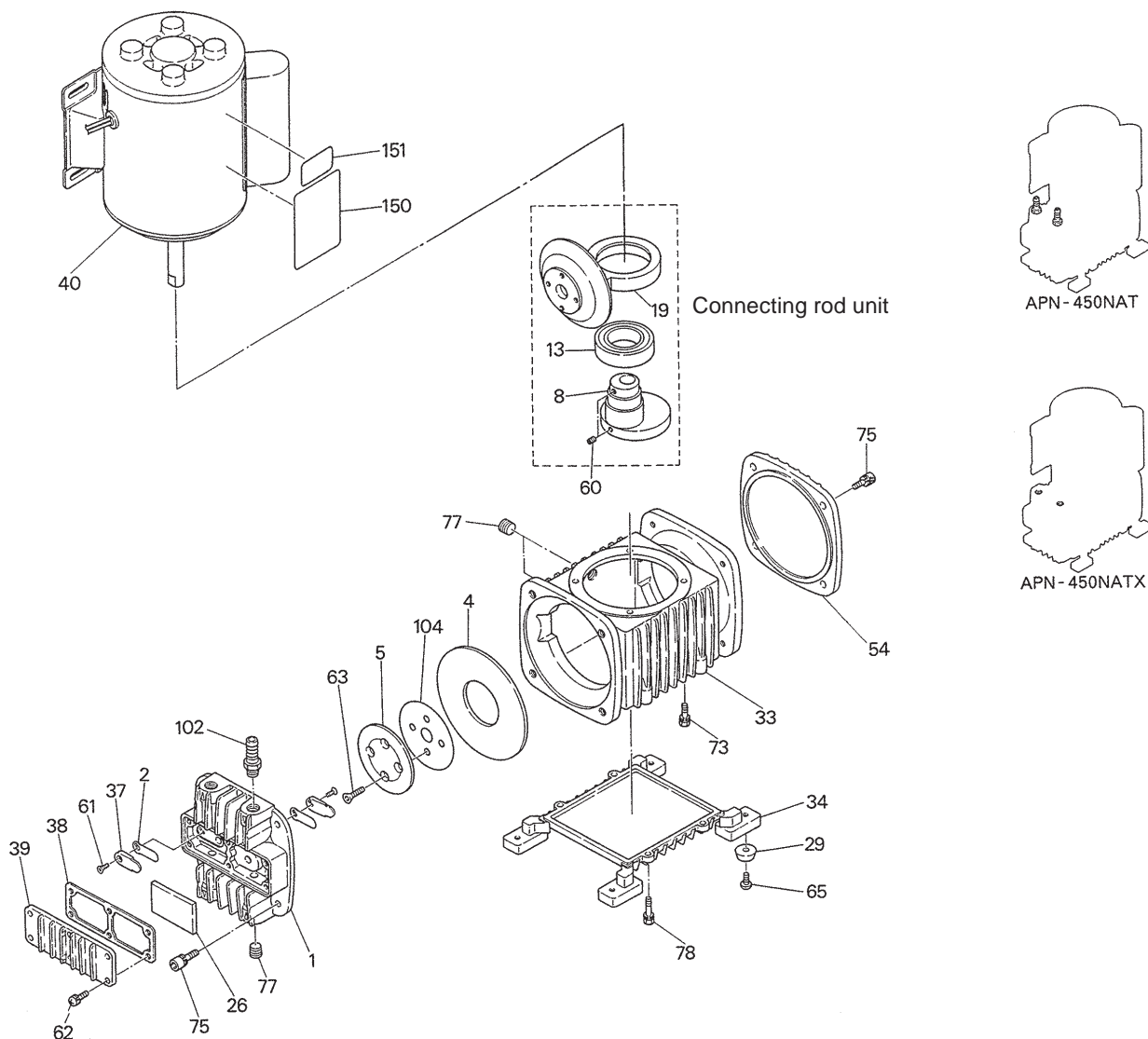


# Outline

## 7. Exploded view

### ■ APN-450NAT/NATX

See this exploded view when dismantling/assembling the pump. Do not dismantle the pump beyond the extent of the instructions on page 28-31, "Wear parts replacement".



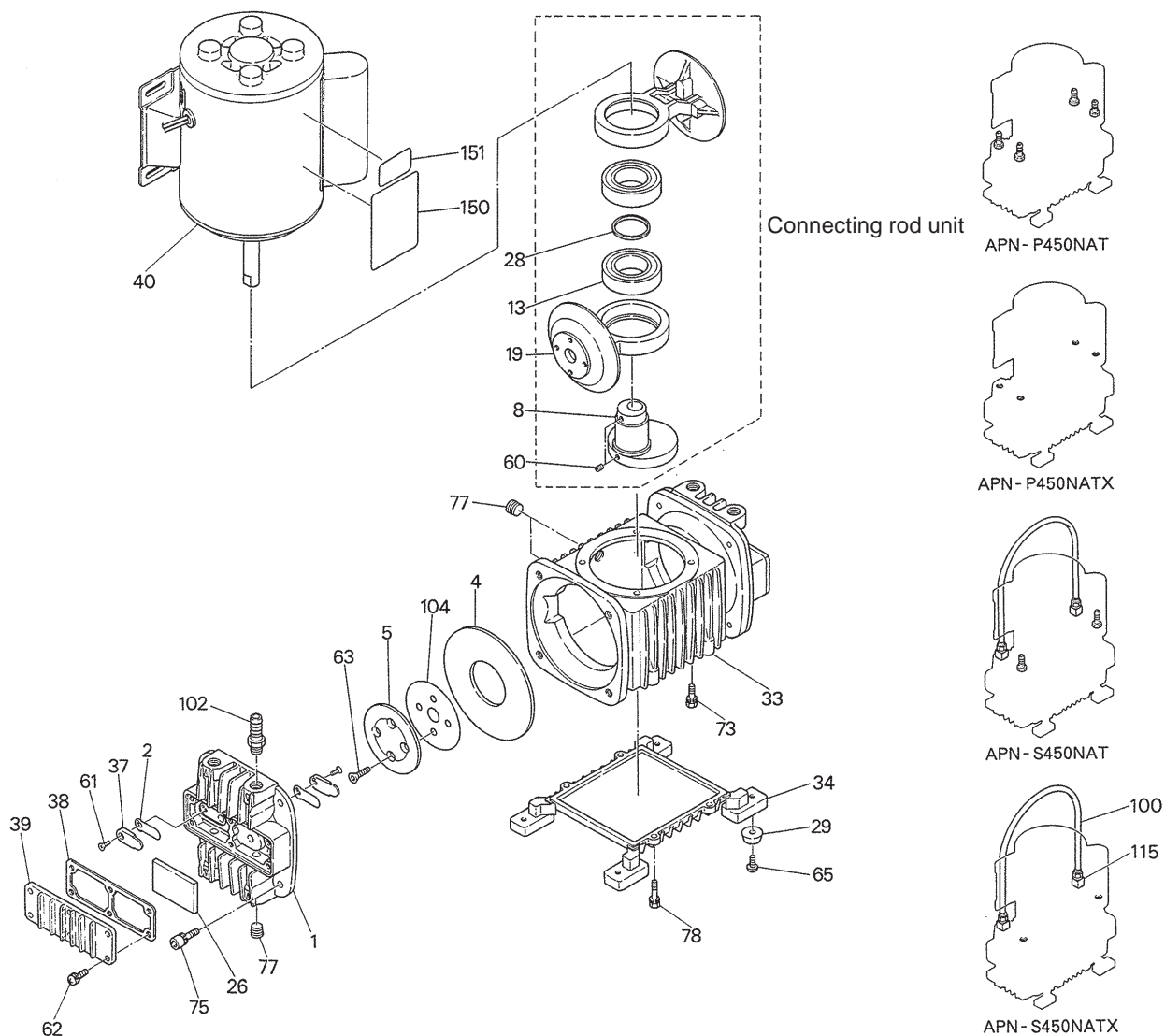
No.	Part names	Q'ty	No.	Part names	Q'ty	No.	Part names	Q'ty
1	Pump head	1	34	Base	1	65	Screw	4
2	Valve	2	37	Valve restraint	2	73	Hex. socket head bolt	4
4	Diaphragm	1	38	Gasket	1	75	Hex. socket head bolt	8
5	Retainer plate	1	39	Cover	1	77	Plug	4
8	Eccentric shaft	1	40	Motor	1	78	Hex. socket head bolt	4
13	Bearing	1	54	Cover	1	102	Fitting*	2
19	Connecting rod	1	60	Set screw	2	104	Seat	1
26	Filter (option)	1	61	Screw	2	150	Name plate (Specification)	1
29	Rubber foot	4	62	Screw	6	151	Name plate (Caution)	1
33	Case	1	63	Screw	4			

\*NAT type only

# Outline

## ■ APN-P/-S450NAT/NATX

See this exploded view when dismantling/assembling the pump. Do not dismantle the pump beyond the extent of the instructions on page 28-31, "Wear parts replacement".



No.	Part names	Q'ty	No.	Part names	Q'ty	No.	Part names	Q'ty
1	Pump head	2	34	Base	1	75	Hex. socket head bolt	8
2	Valve	4	37	Valve restraint	4	77	Plug	6
4	Diaphragm	2	38	Gasket	2	78	Hex. socket head bolt	4
5	Retainer plate	2	39	Cover	2	100	Tube*1	1
8	Eccentric shaft	1	40	Motor	1	102	Fitting*2	4
13	Bearing	2	60	Set screw	2	104	Seat	2
19	Connecting rod	2	61	Screw	4	115	Joint*3	2
26	Filter (option)	2	62	Screw	12	150	Name plate (Specification)	1
28	Collar	1	63	Screw	8	151	Name plate (Caution)	1
29	Rubber foot	4	65	Screw	4			
33	Case	1	73	Hex. socket head bolt	4			

\*1APN-S type only

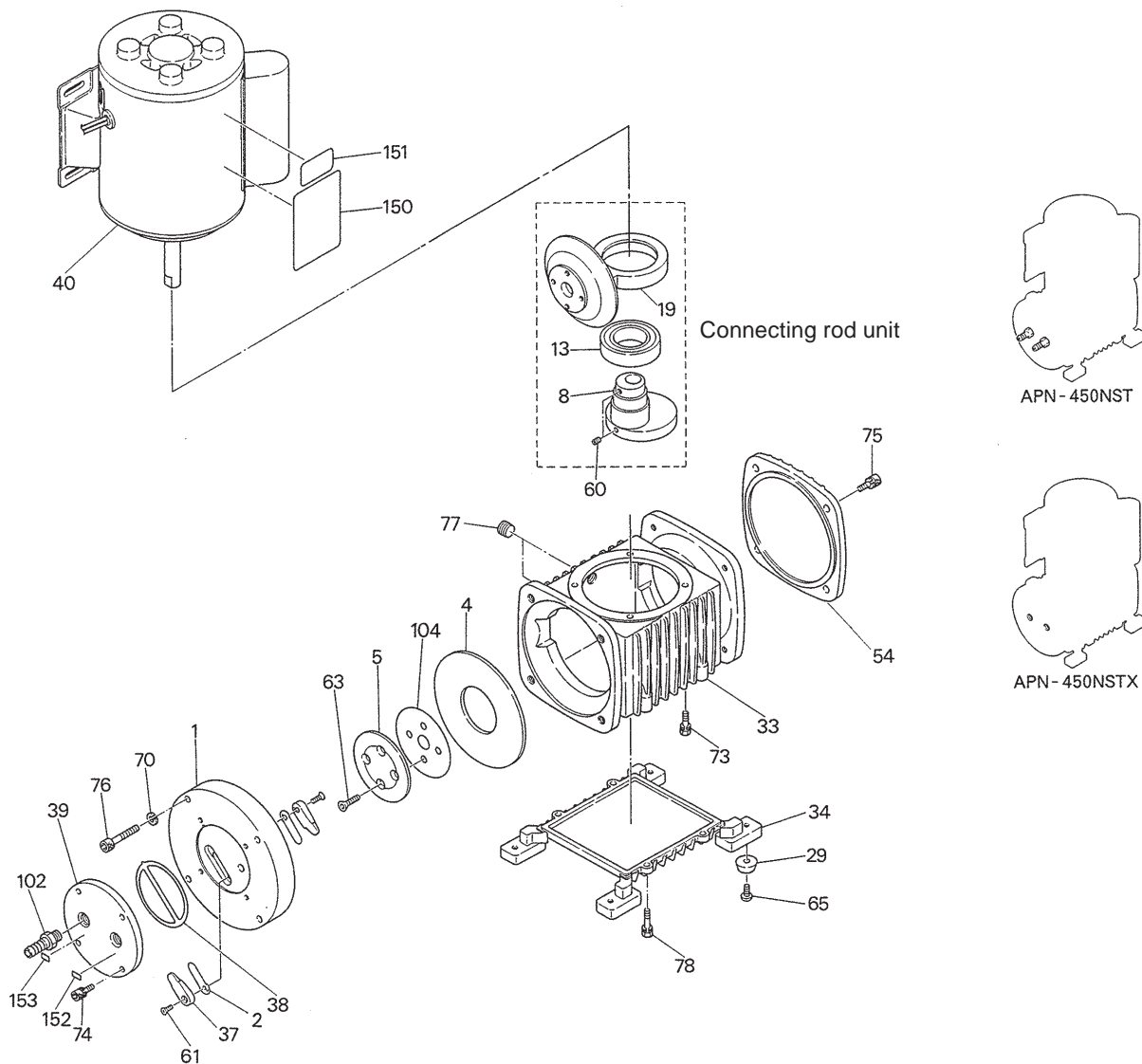
\*2APN-P450NSTX type only

\*3APN-S type only

# Outline

## ■ APN-450NST/NSTX

See this exploded view when dismantling/assembling the pump. Do not dismantle the pump beyond the extent of the instructions on page 28-31, "Wear parts replacement".



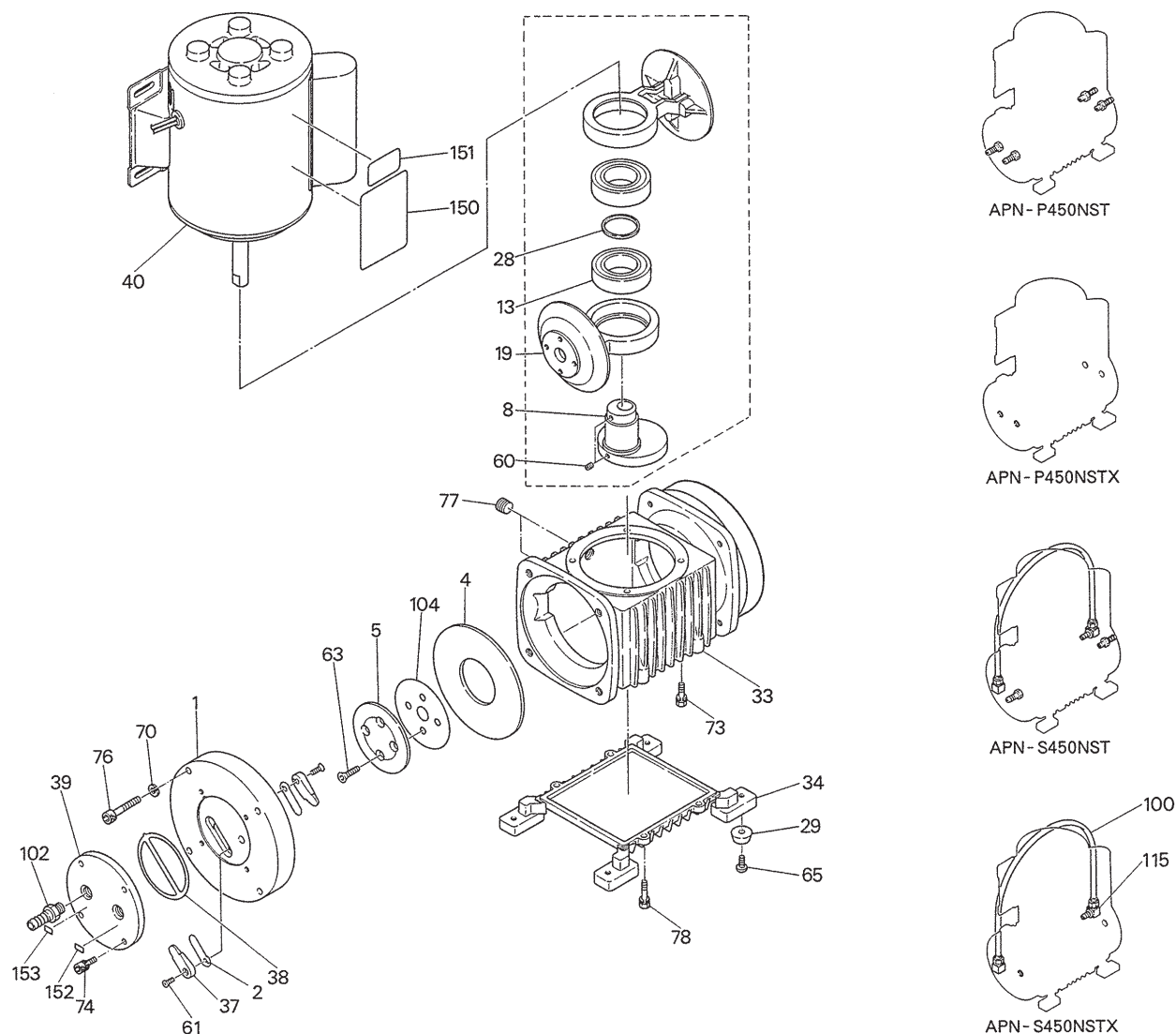
No.	Part names	Q'ty	No.	Part names	Q'ty	No.	Part names	Q'ty
1	Pump head	1	38	Gasket	1	75	Hex. socket head bolt	4
2	Valve	2	39	Cover	1	76	Hex. socket head bolt	4
4	Diaphragm	1	40	Motor	1	77	Plug	2
5	Retainer plate	1	54	Cover	1	78	Hex. socket head bolt	4
8	Eccentric shaft	1	60	Set screw	2	102	Fitting*	2
13	Bearing	1	61	Screw	2	104	Seat	1
19	Connecting rod	1	63	Screw	4	150	Name plate (Specification)	1
29	Rubber foot	4	65	Screw	4	151	Name plate (Caution)	1
33	Case	1	70	Spring washer	4	152	Name plate (IN)	1
34	Base	1	73	Hex. socket head bolt	4	153	Name plate (OUT)	1
37	Valve restraint	2	74	Hex. socket head bolt	4			

\*NST type only

# Outline

## ■ APN-P/-S450NST/NSTX

See this exploded view when dismantling/assembling the pump. Do not dismantle the pump beyond the extent of the instructions on page 28-31, "Wear parts replacement".



No.	Part names	Q'ty	No.	Part names	Q'ty	No.	Part names	Q'ty
1	Pump head	2	37	Valve restraint	4	76	Hex. socket head bolt	8
2	Valve	4	38	Gasket	2	77	Plug	2
4	Diaphragm	2	39	Cover	2	78	Hex. socket head bolt	4
5	Retainer plate	2	40	Motor	1	100	Tube* <sup>1</sup>	1
8	Eccentric shaft	1	60	Set screw	2	102	Fitting* <sup>2</sup>	4
13	Bearing	2	61	Screw	4	104	Seat	2
19	Connecting rod	2	63	Screw	8	115	Joint* <sup>3</sup>	2
28	Collar	1	65	Screw	4	150	Name plate (Specification)	1
29	Rubber foot	4	70	Spring washer	8	151	Name plate (Caution)	1
33	Case	1	73	Hex. socket head bolt	4	152	Name plate (IN)	1
34	Base	1	74	Hex. socket head bolt	8	153	Name plate (Out)	1

\*<sup>1</sup>APN-S type only

\*<sup>2</sup>APN-P450NSTX type only

\*<sup>3</sup>APN-S type only



# *Installation*

<i>1. Before installation .....</i>	<i>16</i>
<i>2. Installation/Tubing/Electrical wiring.....</i>	<i>19</i>

# Installation

## 1. Before installation

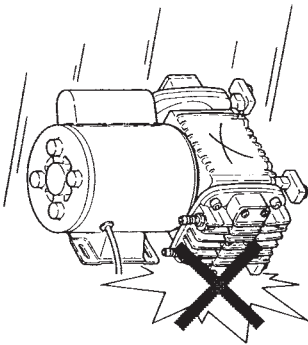
Read through instructions in this section to ensure the optimum performance, safety and service of your pump.

### WARNING

- Do not place dangerous or flammable goods near the pump for your safety.
- Risk of an electrical leak or shock. Do not use a damaged pump.

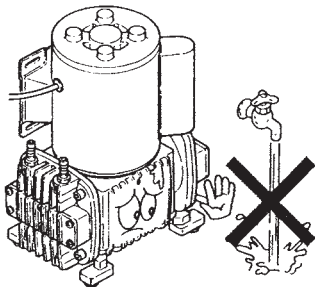


Prohibited

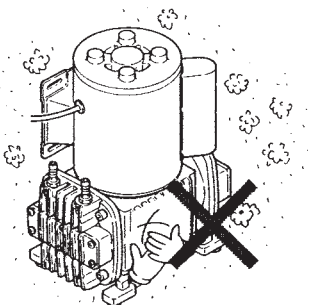


### ■ Precautions

- Dropping or subjecting the pump to a strong impact, failure may result. Handle the pump with care.

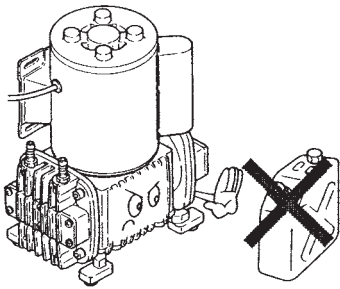


- Do not install the pump in a place where the pump can get wet. Avoid using wet gas, or internal condensation will build up and consequently result in performance deterioration or the short lives of valves and a diaphragm.

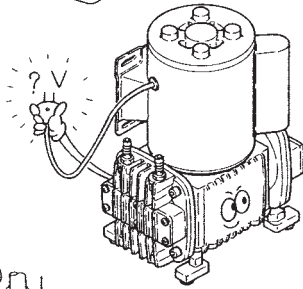


- Do not use the pump in a dusty place. Be sure to provide one end of a suction line with a filter to prevent foreign matters from getting into the pump. Otherwise, the pump performance may reduce or the lives of valves and a diaphragm may remarkably shorten.

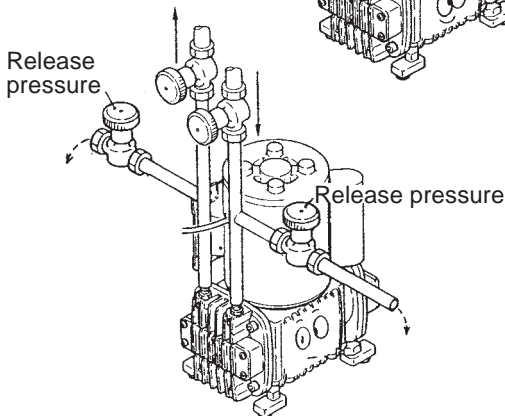
# Installation



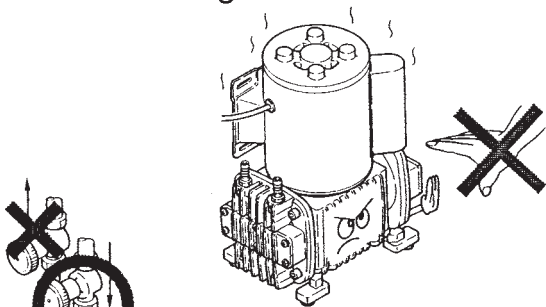
- Do not install the pump in a corrosive or flammable gas atmosphere. Keep good ventilation in a working area. Ambient temperature should not fall below 0°C or exceed 40°C. Observe the allowable gas temperature range of 0 and 40°C.



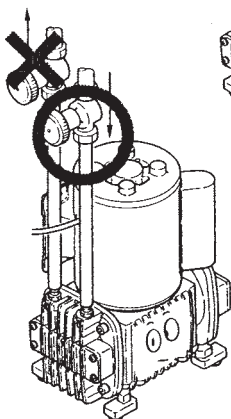
- Observe the rated voltage specified on the name plate. Applying any voltage than the rated one may result in failure.



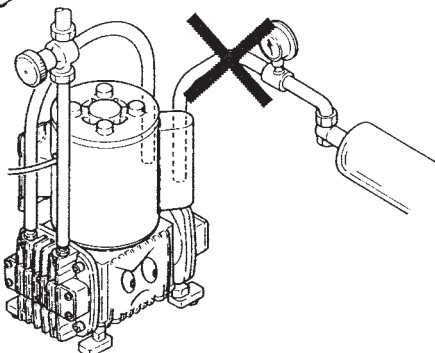
- The pump can not start when the pump head is pressurized by line pressure. Remove pressure before operation. After a long period of stoppage, pump performance at the beginning of operation becomes occasionally unstable. In this case, warm the pump up for 10 minutes with no discharge line pressure.



- Surface temperature may rise high in operation but it dose not mean failure. Do not touch the pump body directly or place objects which may be deformed by heat close to the pump.



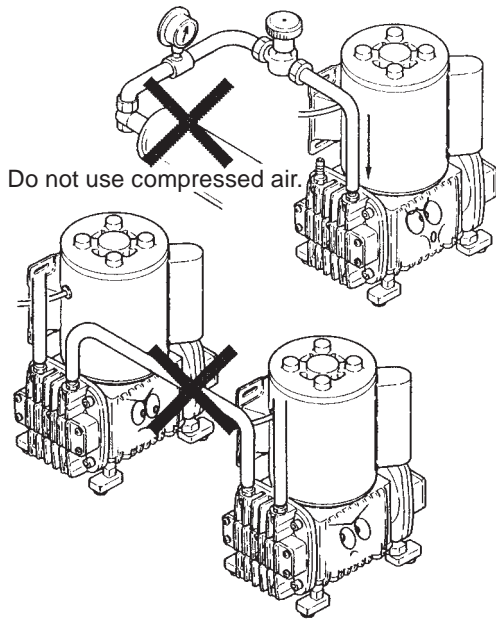
- Always use a suction valve to adjust an air flow.



- The APN-S450 is designed for vacuum application only. Do not connect the pump's outlet with a pressurized discharge line.

# Installation

---



- If the compressed air (higher pressure than atmospheric pressure) is transferred to the pump, sharp deterioration to the lives of the valves, diaphragm and bearing may result. Always keep atmospheric or lower pressure in the suction line.
- Do not tube two or more pumps in series. It may prevent the motor from starting and lead to a burn out.
- Indoor use only  
This product is not dust-/water-proof. Do not install it out of doors, in a humid place or a place where the pump can get wet.
- Do not use solvents such as benzine, alcohol, thinner for maintenance or cleaning, otherwise a coat discolours or comes off.

# Installation

## 2. Installation/Tubing/Electrical wiring

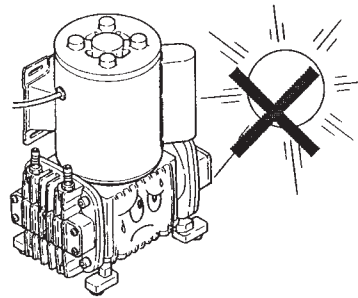
### WARNING

- On sensing danger or abnormality, suspend operation immediately and inspect/solve problems.

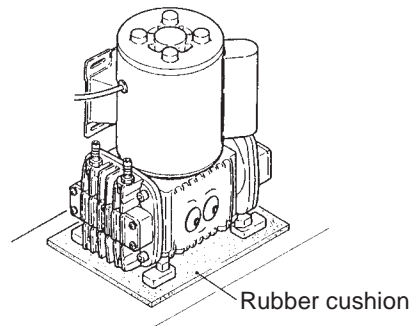


### ■ Installation

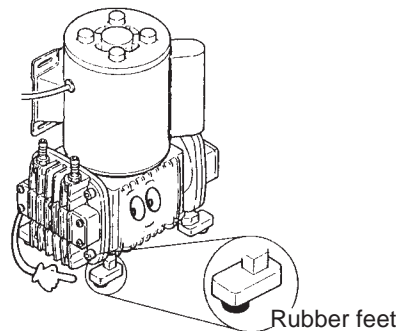
1. Ambient temperature around the pump should not exceed 40°C. Observe the allowable maximum ambient humidity of 90%RH. This product is designed for indoor use only.



2. Choose an installation location where allows convenient access to dismantlement or inspection. Place a rubber cushion under the pump to isolate it from vibration. Anchor the pump through 8 thread holds beneath the base.



3. Fit the rubber feet to the base when just placing the pump on a flat surface.



4. Cut both ends of tubing flat.

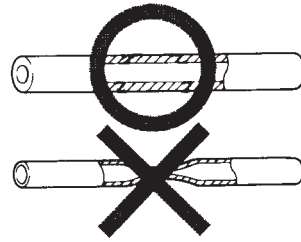
# Installation

## ■ Tubing

1. Tube should be thick enough. The use of a thin and light tube may reduce suction force and an air flow.

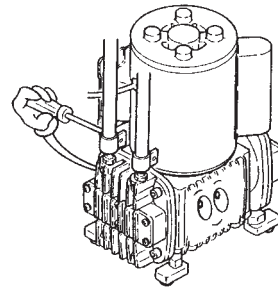
### ⚠ CAUTION

Avoid sharp turns or bends. Otherwise, an tube end may break.



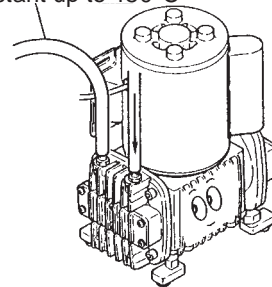
2. The short tubing with the minimum bends is optimal to reduce resistance.

3. Be sure to secure tube connection by using a screw/band tube clamp in order to eliminate the possibility of leakage.



4. In case of providing a discharge line to the pump outlet, tube material should be heat-resistant of 150°C or more. Hot gas may be discharged through the outlet depending on operating conditions.

Heat resistant up to 150°C



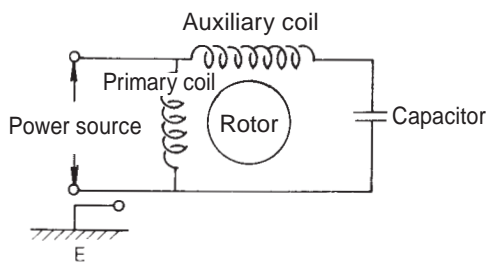
# Installation

## ■ Electrical wiring

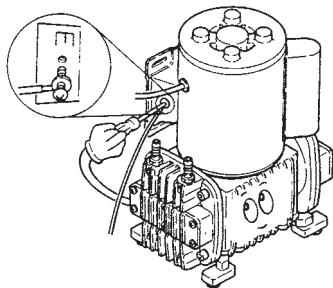
Electrical wiring must be done by a qualified person who has a full knowledge of safety. We are not responsible for personal injury or property damage due to nonobservance of this warning. Contact us or your nearest distributor as necessary.

<Before wiring>

1. Confirm that power is disconnected before work.
2. Wiring work should be done in accordance with relevant electric work requirements. Use the recommended wiring accessories.



3. Observe the rated voltage specified on the name plate.
4. When an earth leakage breaker is used and has tripped, always investigate and solve root causes before resuming operation. Be sure to unplug the pump during investigation.
5. Connect an earth wire to the earth terminal on the motor with a M4 screw.



# *Operation*

<i>1. Before operation .....</i>	<i>23</i>
<i>2. Pump operation .....</i>	<i>23</i>



# Operation

## 1. Before operation

1. Before pump operation, check that each tube connection is secured.
2. Check that a suction line is connected to the inlet and a discharge line to the outlet.

### CAUTION

If a suction line and a discharge line are connected the other way around, pumping process is inverted.

3. Check that the pump is firmly fixed on a mounting position.

## 2. Pump operation

Operate the pump according to the following steps.

No.	Procedure	Contents
1	Check tubing, wiring and voltage.	<ul style="list-style-type: none"> <li>● See "■ Tubing" and "■ Electrical wiring" sections.</li> <li>● Check the spec label to see if power supply voltage is correct.</li> </ul>
2	Open valves.	<ul style="list-style-type: none"> <li>● Fully open both discharge and suction lines.</li> </ul>
3	Supply power to the pump.	<ul style="list-style-type: none"> <li>● Check the item 1 and 2. Then turn on power and start the pump.</li> <li>● Smooth starting may not be obtained when ambient temperature is 10°C or below. In this case, run the pump with no discharge line pressure for a few minutes to warm it up.</li> </ul>
4	Adjust air flow.	<ul style="list-style-type: none"> <li>● After the pump has reached a specified stroke rate, initiate full scale operation.</li> <li>● Always adjust an air flow by the suction valve.</li> </ul>
5	Points to be checked during operation	<ul style="list-style-type: none"> <li>● After starting, check a pressure gauge to see if suction and discharge line pressure are correct and an air flow meter to see if the specified air flow is obtained.</li> <li>● Always adjust air flow by a suction valve.</li> <li>● Keep a suction line pressure at or below atmospheric pressure.</li> <li>● In case electric power has failed while the pump is running, switch off main power. Otherwise, the motor may not restart or may burn out depending on a line pressure at the time of power recovery.</li> </ul>

### ■ Stop and storage

- Before a long period of stop (1 week or more)...  
 Depressurize the system and stop air/gas supply.  
 Some liquids may harden or crystallize when they are left for a long time. In this case clean wet ends before resuming operation.
- Do not store the pump in the following places where...
  1. Ambient temperature exceeds 40°C or falls below 0°C.
  2. Under a flammable/corrosive atmosphere or in a dusty/humid place.
  3. Under vibration or wind & rain.

# *Maintenance*

<i>1. Troubleshooting .....</i>	<i>25</i>
<i>2. Maintenance &amp; Inspection.....</i>	<i>26</i>
<i>3. Wear part replacement .....</i>	<i>27</i>

# Maintenance

## 1. Troubleshooting

**Turn off power to stop operation upon sensing abnormalities. And then look for a root cause or contact us as necessary.**

States	Possible causes	Solutions
Pump does not run.	The pump is not powered.	Check wiring.
	Motor failure	Replace with a new motor. Contact us.
	Plumbing damage or poor connection	Repair plumbing as necessary, or secure connection.
	Wear of an eccentric shaft	Replace the con rod unit. Contact us.
	Wear of the con rod unit bearing	Replace the con rod unit. Contact us.
	Wear of motor bearings	Replace a motor with new one. Contact us.
	Voltage reduction	Keep the rated voltage.
	Suction line pressure is higher than atmospheric pressure.	Keep the pressure at or below atmospheric pressure.
Unintentional operation stop.	Motor failure	Replace with a new motor. Contact us.
	Wear of the con rod unit bearing	Replace the con rod unit. Contact us.
	Wear of motor bearings	Replace a motor with new one. Contact us.
	Voltage reduction	Keep the rated voltage.
	Suction line pressure is higher than atmospheric pressure.	Keep the pressure at or below atmospheric pressure.
	Discharge line pressure is higher than the specified one.	For the series head type, keep the pressure equal to atmospheric pressure.
Reduction of air flow/discharge pressure	Plumbing damage or poor connection	Repair plumbing as necessary, or secure connection.
	Pump head fixing screws are loose.	Tighten them at specified torque.
	Diaphragm fixing screws are loose.	Tighten them at specified torque.
	Diaphragm damage	Replace with a new one.
	Clogging	Remove clogging.
	Worn valves	Replace with new ones.
	Bracket/Diaphragm fixing screws are loose.	Secure them.
Abnormal noise	Pump head fixing screws are loose.	Tighten them at specified torque.
	Diaphragm fixing screws are loose.	Tighten them at specified torque.
	Diaphragm damage	Replace with a new one.
	Bracket/Diaphragm fixing screws are loose.	Secure them.
	Wear of an eccentric shaft	Replace the con rod unit. Contact us.
	Wear of the con rod unit bearing	Replace the con rod unit. Contact us.
	Wear of motor bearings	Replace a motor with new one. Contact us.

# Maintenance

## 2. Maintenance & Inspection

### ■ Daily inspection

Pay attention to the following items during operation. Stop operation on sensing danger and solve problems on the Troubleshooting section.

No.	States	Points to be checked	How to check
1	Operation	<ul style="list-style-type: none"> <li>● If air is pumped.</li> <li>● If the suction and discharge pressure are normal.</li> <li>● If power voltage and current are normal.</li> </ul>	<ul style="list-style-type: none"> <li>● Air flow meter, pressure gauge or visual inspection</li> <li>● See a spec label.</li> </ul>
2	Starting	<ul style="list-style-type: none"> <li>● If abnormal noise or vibration occurs. They are signs of abnormal operation.</li> <li>● A baseplate, if installed, under the pump may resonate with operation, making a mechanical noise. Insert a rubber cushion as necessary to reduce resonance.</li> </ul>	<ul style="list-style-type: none"> <li>● Visual or audio inspection</li> <li>● Visual or audio inspection</li> </ul>
3	Air leak or ingress from pump head joints and a suction line	<ul style="list-style-type: none"> <li>● Tighten a loose joint.</li> </ul>	<ul style="list-style-type: none"> <li>● Air flow meter, pressure gauge or visual inspection</li> </ul>
4	Pump and motor surface temperature rise	<ul style="list-style-type: none"> <li>● Pump and motor surface temperature should be at or below a total of ambient temperature plus 50°C.</li> </ul>	<ul style="list-style-type: none"> <li>● Thermometer</li> </ul>

### ■ Wear parts

If pump performance has remarkably reduced, replace diaphragms and valves with new ones.

Wear part duration varies with the pressure, temperature and characteristics of liquid.

The estimated life below is calculated based on continuous operation with clean water at ambient temperature (Room temperature range is 0-40°C.).

Model	Load range	Estimated life				
		Valve	Diaphragm	Seat	Gasket	Filter (Option)
APN- $\begin{pmatrix} 450 \\ P450 \\ S450 \end{pmatrix}$ NAT-NATX	All range	8000		4000		4000
APN- $\begin{pmatrix} 450 \\ P450 \\ S450 \end{pmatrix}$ NST-NSTX		8000		4000		-

# Maintenance

---

---

## 3. Wear part replacement

### CAUTION

- **Turn off power before work**

Risk of electrical shock. Be sure to turn off power to stop the pump and related devices before work.

- **Do not touch the pump or pipe with bare hands**

Risk of burning. The surface temperature of the pump or pipe gets high in or right after operation.

- **Wear protective clothing**

Always wear protective clothing such as safety goggles and protective gloves during pipework or dismantlement.

Do not get wet with dripping residual liquid in disconnection.

### ■ Before dismantlement

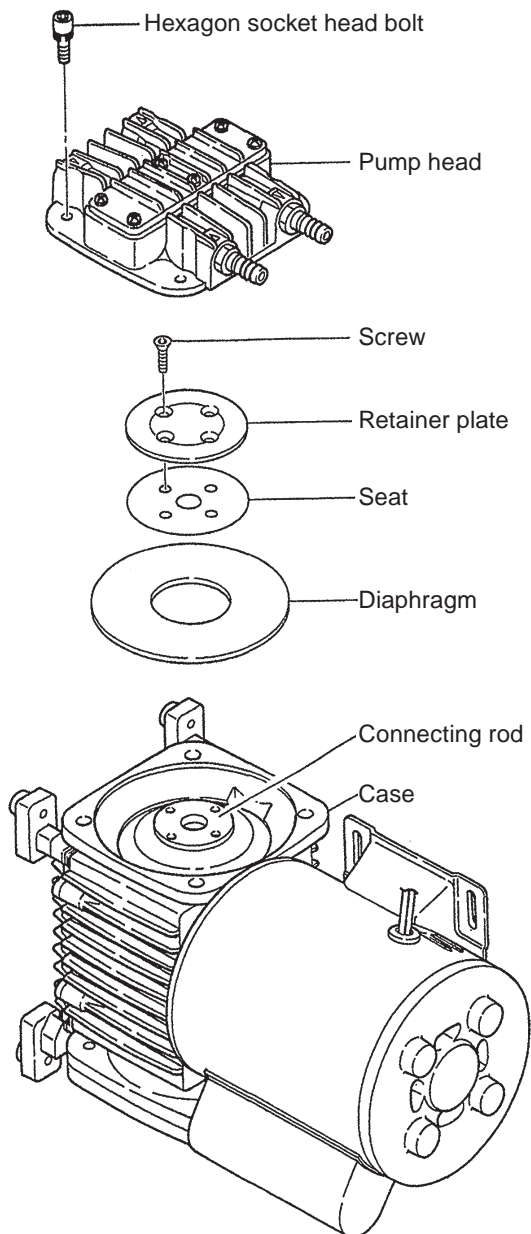
- a. Turn off power to stop the pump. Then start to remove wiring including an earth wire.*
- b. Remove the pump from plumbing system and for the convenience of dismantlement.*

# Maintenance

## ■ Corrosion resistant (stainless) type

<APN-450NAT/NATX, APN-P/-S450NAT/NATX>

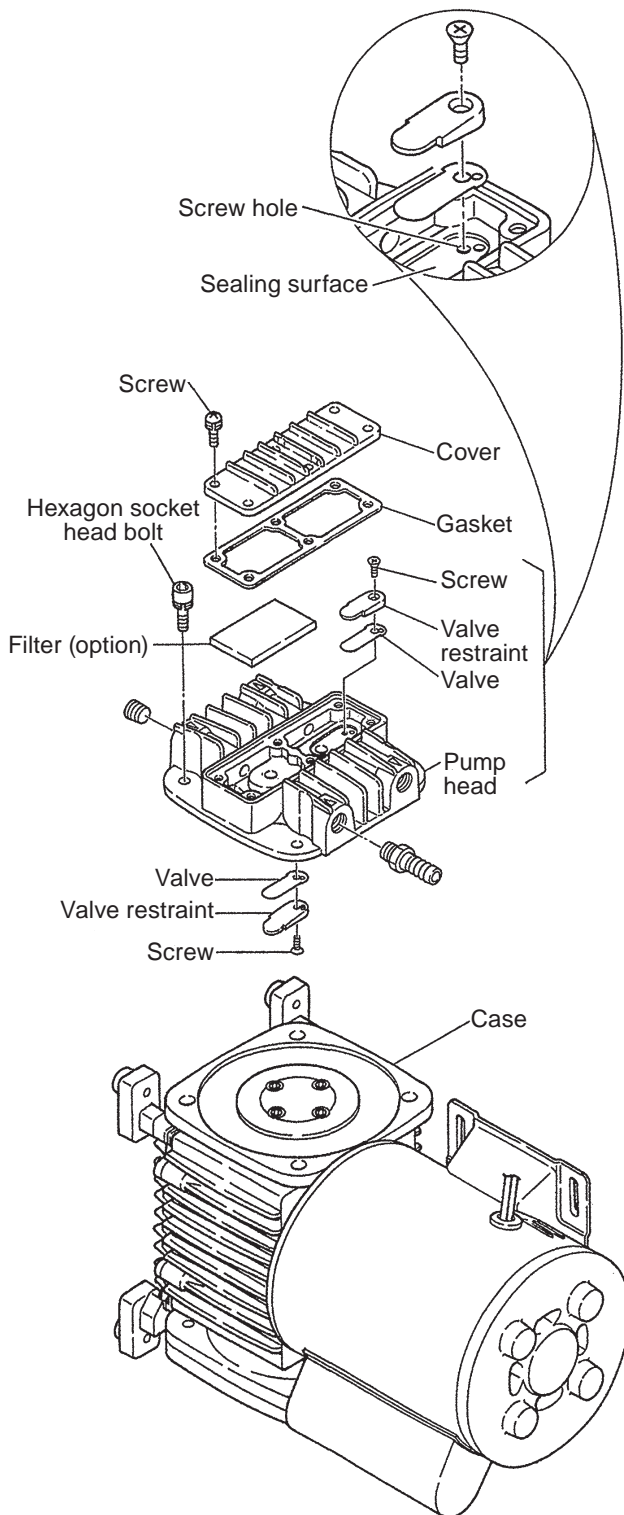
Go through the following steps to take apart or put together the pump. Do not dismantle the pump beyond the extent of the instructions.



### Diaphragm & seat dismantlement

1. Lay the pump on its side with the pump head upwards. See the left picture.
2. Remove 4 hexagon socket head bolts with a 5mm hexagon wrench and detach the pump head.
3. Remove 4 screws with a 3mm hexagon wrench and take out a retainer plate, seat and diaphragm.
4. Place a new diaphragm onto the connecting rod.
5. Place a new seat and retainer plate onto the diaphragm. Apply locking agent (LOCKTITE No.222) or equivalent) to the thread of the screws and tighten them with a 3mm hexagon wrench by 3.4N•m to fasten these parts onto the connecting rod.
6. Press down the diaphragm until it bottoms out and then mount the pump head with 4 hexagon socket head bolts.  
Tighten hexagon socket head bolts in diagonal order until they bottom out.

# Maintenance



## Valve replacement

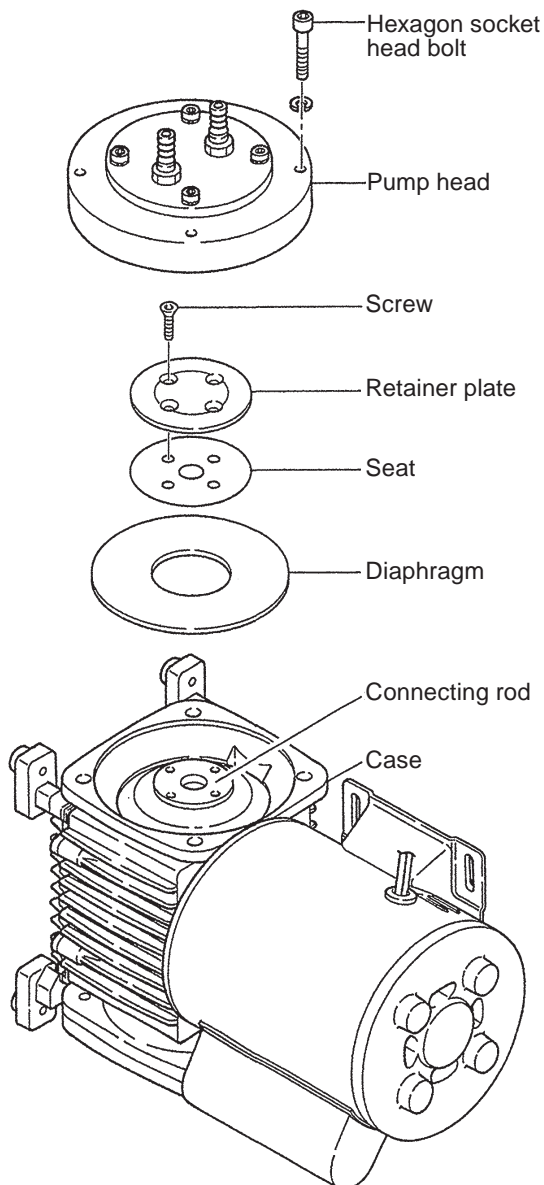
1. Remove the pump head.
2. Remove all the cover mounting screws to take out the valve restraint and valve.  
Clean valve insertion areas and sealing surfaces on the pump head.
3. Take out the valve beneath the pump head as well.
4. Place a new valve and fasten a screw. Note the valve can not be mounted upside down.
5. Place a new gasket onto the pump head and secure the cover with the mounting screws by 2.8N•m. Do not forget to attach the gasket or catch it in the cover.
6. Press down the diaphragm until it bottoms out and then mount the pump head with 4 hexagon socket head bolts.  
Tighten hexagon socket head bolts in diagonal order until they bottom out.
7. Follow the same step for the other pump head of the twin heads type. Replace an optional filter with new one if it is installed.

# Maintenance

## ■ Corrosion resistant (stainless) type

<APN-450NST/NSTX, APN-P/-S450NST/NSTX>

Go through the following steps to take apart or put together the pump. Do not dismantle the pump beyond the extent of the instructions.

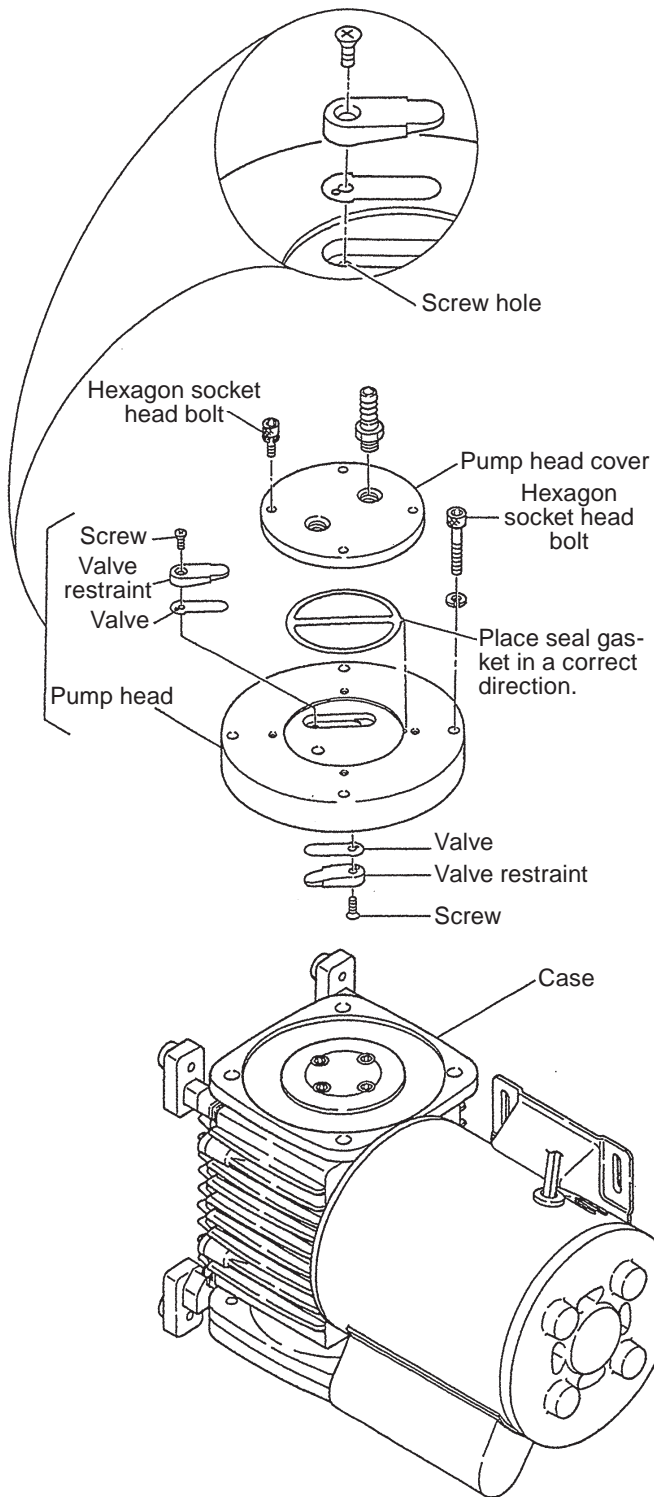


### *Diaphragm & seat dismantlement*

1. Lay the pump on its side with the pump head upwards. See the left picture.
2. Remove 4 hexagon socket head bolts with a 5mm hexagon wrench and detach the pump head.
3. Remove 4 screws with a 3mm hexagon wrench and take out a retainer plate, seat and diaphragm.
4. Place a new diaphragm onto the connecting rod.
5. Place a new seat and retainer plate onto the diaphragm. Apply locking agent (LOCKTITE No.222 or equivalent) to the thread of the screws and tighten them with a 3mm hexagon wrench by 3.4N•m to fasten these parts onto the connecting rod.
6. Press down the diaphragm until it bottoms out and then mount the pump head with 4 hexagon socket head bolts.  
Tighten hexagon socket head bolts in diagonal order until they bottom out.



# Maintenance



## Valve replacement

1. Remove the pump head.
2. Remove the 4 hexagon socket head bolts on the cover with a 4mm wrench to remove valve retainers and valves.  
Clean valve insertion areas and sealing surfaces on the pump head.
3. Place a new valve and fasten a screw. Note the valve can not be mounted upside down.
4. Place a new gasket onto the pump head and secure the cover with hexagon socket head bolts. Tighten hexagon socket head bolts in diagonal order until they bottom out.
5. Press down the diaphragm until it bottoms out and then mount the pump head with 4 hexagon socket head bolts.  
Tighten hexagon socket head bolts in diagonal order until they bottom out.







IWAKI CO.,LTD. 6-6 Kanda-Sudacho 2-chome Chiyoda-ku Tokyo 101-8558 Japan  
 TEL:(81)3 3254 2935 FAX:3 3252 8892(<http://www.iwakiumps.jp>)

( ) Country codes

Australia	IWAKI Pumps Australia Pty. Ltd.	TEL: (61)2 9899 2411	FAX: 2 9899 2421	Italy	IWAKI Europe GmbH, Italy Branch	TEL: (39)0444 371115	FAX: 0444 335350
Austria	IWAKI EUROPE GmbH	TEL: (49)2154 92540	FAX: 2154 9254 48	Korea	IWAKI Korea Co.,Ltd.	TEL: (82)2 2630 4800	FAX: 2 2630 4801
Belgium	IWAKI Belgium n.v.	TEL: (32)1367 0200	FAX: 1367 2030	Malaysia	IWAKIm Sdn. Bhd.	TEL: (60)3 7803 8807	FAX: 3 7803 4800
China	IWAKI Pumps (Shanghai) Co., Ltd.	TEL: (86)21 6272 7502	FAX: 21 6272 6929	Norway	IWAKI Norge AS	TEL: (47)23 38 49 00	FAX: 23 38 49 01
China	IWAKI Pumps (Guangdong) Co., Ltd.	TEL: (86)750 3866 228	FAX: 750 3866 278	Singapore	IWAKI Singapore Pte. Ltd.	TEL: (65)6316 2028	FAX: 6316 3221
China	GFTZ IWAKI Engineering & Trading (Guangzhou)	TEL: (86)20 8435 0603	FAX: 20 8435 9181	Spain	IWAKI Europe GmbH, Spain Branch	TEL: (34)93 37 70 198	FAX: 93 47 40 991
China	GFTZ IWAKI Engineering & Trading (Beijing)	TEL: (86)10 6442 7713	FAX: 10 6442 7712	Sweden	IWAKI Sverige AB	TEL: (46)8 511 72900	FAX: 8 511 72922
Denmark	IWAKI Nordic A/S	TEL: (45)48 24 2345	FAX: 48 24 2346	Switzerland	IP Service SA	TEL: (41)26 674 9300	FAX: 26 674 9302
Finland	IWAKI Suomi Oy	TEL: (358)9 2745 810	FAX: 9 2742 715	Taiwan	IWAKI Pumps Taiwan Co., Ltd.	TEL: (886)2 8227 6900	FAX: 2 8227 6818
France	IWAKI France S.A.	TEL: (33)1 69 63 33 70	FAX: 1 64 49 92 73	Taiwan	IWAKI Pumps Taiwan (Hsin-chu) Co., Ltd.	TEL: (886)3 573 5797	FAX: (886)3 573 5798
Germany	IWAKI EUROPE GmbH	TEL: (49)2154 9254 0	FAX: 2154 9254 48	Thailand	IWAKI (Thailand) Co.,Ltd.	TEL: (66)2 322 2471	FAX: 2 322 2477
Holland	IWAKI Europe GmbH, Netherlands Branch	TEL: (31)74 2420 011	FAX: 2154 9254 48	U.K.	IWAKI Pumps (UK) LTD.	TEL: (44)1743 231363	FAX: 1743 366507
HongKong	IWAKI Pumps Co., Ltd.	TEL: (852)2 607 1168	FAX: 2 607 1000	U.S.A.	IWAKI AMERICA Inc.	TEL: (1)508 429 1440	FAX: 508 429 1386
Indonesia	IWAKI Singapore (Indonesia Branch)	TEL: (62)21 690 6606	FAX: 21 690 6612	Vietnam	IWAKI pumps Vietnam Co.,Ltd.	TEL: (84)613 933456	FAX: 613 933399